



**GRAND OPENING - FALL 2023**

# NEENAH HIGH SCHOOL

# BY THE NUMBERS



Neenah High School consists of **446,703** square feet of building space on its 225-acre site.



There are **968** student lockers and **1,300** lockers in the athletics areas



The project was completed in **546** work days



**1,875** Workers were on site during the construction project



**1,053** Parking spaces on site



**16**

Private practice and ensemble rooms for music instruction



**26** Basketball hoops installed



**3,580**

Seats in the football stadium grandstand

Precast walls backstage in the auditorium are **62** feet high



**776**

Permanent seats have been installed in the auditorium. Plenty of ADA seating areas push the total capacity over 800.



# WELCOME TO NEENAH HIGH SCHOOL

There are moments in life that will always be remembered. For the Neenah Joint School District, today is one of those days.

The ceremonial ribbon-cutting will usher in a new era of education in Neenah with a state-of-the-art high school that is sure to make all of us proud.

Knowing these moments only happen once or twice a century was at the forefront of our design and construction. Our primary goal was to create a school that offers our current and future students the best possible learning experience. It was also paramount for the school to remain contemporary for students who haven't even been born yet and will someday attend this school as a Neenah Rocket.

Throughout our journey, we have remained grateful to the community for this opportunity. Neenah is the only District in Wisconsin opening a new high school this fall. That speaks volumes about this community's commitment to education and its future. In this publication, you will see over 100 names of individuals who were part of committees that assisted with the design of our high school. Our ambition was to make sure that every perspective was considered.

You will see the product of their work throughout the school as you tour the building. There were a countless number of others who also played a part in the construction of this school and we are grateful for their contributions as well.

We are thrilled for our alumni, students, staff and community to enjoy this building for many decades to come. We say it often and it's never been more true than today: Neenah With Pride!



Dr. Mary Pfeiffer  
Neenah Joint School District Superintendent

## DEDICATION CEREMONY AUGUST 13, 2023 ♦ 3 P.M.

### Welcome

Dr. Mary Pfeiffer, Superintendent

### Remarks

Charlie Wunderlich, Senior student  
Brian Wunderlich, Neenah H.S. Principal  
Brian Epley, Neenah School Board President

### Ribbon cutting

One student from each grade level will participate in the ceremonial ribbon cutting

### Neenah High School Song

### Tours of the Building

Self-guided tours - Neenah High School staff members will be stationed throughout the school to assist.



# BUILDING NEENAH WITH PRIDE



**After nearly seven years of planning, two referendums and extensive community feedback, Neenah High School becomes a reality for the 2023-24 school year.**

**W**hen the Neenah Joint School District began studying its facilities needs in the fall of 2016, the idea of a new high school was not its intended result.

With all of its 13 buildings nearing at least 50 years old and having been behind in capital maintenance over prior decades, the District determined it was time for something to be done. In December of 2016, Bray Architects was hired to complete a facilities study.

The study included initial surveys of parents and staff as well as an analysis of the conditions in every school. Four facilities planning meetings took place in the Shattuck Middle School Auditorium to present the findings of the report and to establish some potential master plans. The first meeting was held on February 15, 2018, where the Board reviewed a 603-page report and established their values and priorities in facilities. The Board later narrowed 13 potential options down to three master plans that affected the entire District. An open forum at the March 19, 2018, meeting drew 31 speakers offering their opinions.

## ***A referendum plan is developed***

Seven more community meetings were held throughout 2018 and a community survey was conducted. The feedback was clear that the biggest priority was to address Shattuck Middle School, which opened in 1929 and was in poor condition. The District's first facilities referendum question since 1995 was developed in December of 2018, asking taxpayers for \$129.5 million, including an \$83.9 million new middle school to replace Shattuck. The plan also allocated \$31.1 million for upgrades to building infrastructure throughout the District and \$5 million for upgrades to the technical education classrooms at the high school. The plan supported safety and security and Americans with Disabilities Act (ADA) upgrades at every building.

Voters rejected the plan in April by just 498 votes (6,654-6,156). Community members were asked for their feedback on why the plan was rejected and many believed that not enough students were affected in the upgrades for the costs.

## ***Changing course***

Based on that response, the District created six potential pathways for future grade level alignments. Four community engagement sessions were conducted during the summer of 2019 to evaluate the pathways. Feedback from the 292 community members who attended the sessions along with another community-wide survey was evaluated at eight more special Board meetings during 2019. That feedback, along with two other significant changes, resulted in a drastically different referendum plan the following year.












*Community members gathered at Spring Road on July 15, 2019*

One change was that in 2020, the District made its final payments towards an unfunded liability for employee post-employment benefits. The District had allocated \$5 million per year to fully fund the benefit in 2012 and now could designate those funds toward facility improvements. Additionally, a local landowner approached the District with 150 acres for sale near the center of the school District boundary west of the city. Subsequently, an adjacent landowner offered an additional 75 acres to sell bringing the total acreage to 225. The Board approved both purchases in July 2019.



## A TIMELINE OF PROGRESS

								
<b>Dec. 6, 2016</b> Bray Architects hired to conduct a District-wide facilities study	<b>Feb. 15, 2018</b> First of 11 community facilities planning meetings held in Shattuck Auditorium to review the results of the facilities study	<b>Dec. 18, 2018</b> School Board approves a \$129.5 million referendum question for a new middle school and high school, ADA and safety upgrades	<b>April 2, 2019</b> Voters reject the \$129.5 million referendum	<b>July 15, 2019</b> First of four community engagement sessions held at Spring Road Elementary School to discuss a potential 2020 referendum	<b>Dec. 17, 2019</b> School Board approves a \$114.9 million referendum question for a new high school and ADA and safety upgrades	<b>April 13, 2020</b> Election results announced that voters approved the \$114.9 million referendum on April 7	<b>June 10, 2021</b> Ground-breaking held at Neenah High School site	<b>August 13, 2023</b> Dedication and ribbon cutting ceremony at Neenah High School

### A new referendum plan emerges

These changes and the feedback from the community resulted in a plan to build a high school on the newly-acquired land and renovate the existing high school into a middle school for grades 5-8 that would close Shattuck and create additional space at all elementary schools. A referendum question was created asking voters for \$114.9 million. Along with a new school, the plan also addressed the safety and security and ADA upgrades across the District. Instead of an estimated tax impact of \$1.67 per \$1,000 of property value in 2019, the new referendum would impact voters at 99 cents per \$1,000 of property value. In order to complete all of the projects, the District committed an amount of \$66.8 million above and beyond the referendum amount with taxpayers realizing no additional increase. The referendum met an unforeseen challenge when the COVID pandemic threw the school year and the April 2020 election into chaos. Despite the voting issues and a six-day wait for the final results, the referendum passed with over 54 percent in favor at 8,817-7,456.



### What's next?

The 2023-24 school year will be one of significant change for the District as the students in grades 5-8 will attend Neenah Middle School at the former high school building. Roosevelt Elementary closed and students from Roosevelt and Wilson Elementary will combine in the former Horace Mann Middle School building. Alliance Charter School will be positioned to increase to two classes per grade level in the former Wilson building.

The journey has been long and eventful and isn't yet complete. Some more restructuring at the elementary levels is being considered as those buildings still have facilities needs to be addressed. Just as it has done throughout the entire process, the Board will continue to seek community input to make the most-informed decisions for the Districts' students.



Students broke ground on the high school on June 10, 2021

Design for the new high school began immediately and faced another challenge with almost the entire process being done virtually. Over 100 staff and community members joined a variety of subcommittees to offer Bray Architects feedback on concepts for the building. Miron Construction had been chosen as the contractor for the project and officially broke ground on June 10, 2021. In the meantime, the safety and security and ADA upgrades were completed during the summers of 2020 and 2021 and remodeling of the middle school took place in the summers of 2022 and 2023.

### NEENAH H.S. CORE PLANNING TEAM

- Mary Pfeiffer, Superintendent
- Matt Anderson, Director of Instructional Technology
- Chad Buboltz, Director of Learning of Leadership
- Sue Hull, Director of Curriculum, Instruction and Assessment
- Jon Joch, Director of Revenue Enhancement & Business Services Support
- Adam Krieger, Director of Facilities/Engineer
- Stephanie Phernetton, Principal, Shattuck Middle School
- Jim Strick, Communications Manager
- Scott Thompson, School Board Member
- Andrew Thorson, Director of Business Services
- Brian Wunderlich, Principal, NHS

\* - Note: job titles listed here and throughout this book reflect as of May 2020



# ACADEMICS

- \* Classroom areas were created with collaboration and engagement for students and staff at the core of design. The most noticeable feature is lots of natural light with windows to the outside and the hallways. The hallway areas are designed with small group collaboration spaces and many classrooms are connected to allow for more flexible learning opportunities.
- \* Every wing will include classes from all four core content areas. The goal is to keep grade levels together as much as possible and allow educators teaching similar courses to collaborate more.
- \* Science labs anchor the middle sections of each floor of the academic wings. Physics rooms have features such as tracks in the ceilings to allow for demonstrations. Science rooms are created for students to work in groups of three and feature more sinks and equipment than at the previous high school. The science area also includes a hydroponics lab that will be used to grow lettuce year-round that is planned for use in the school food service.
- \* A major feature of the new building is that art, welding, woods and engineering courses will be located in the most visible areas of the school. Every student will walk past these areas daily and large windows will showcase the learning taking place. The windows also allow staff members to supervise students throughout the classroom and labs so that students can be working on different projects simultaneously. The autos classroom features four garage doors and a hydraulic lift.
- \* The library is the “hub” of the academic areas on the second level overlooking the atrium. An aesthetically-inviting location with an abundance of natural light, the library was designed with student collaboration and technology at the forefront.
- \* The family and consumer education area features a Pro Serv kitchen that is compatible with Fox Valley Technical College’s course offerings. The kitchen gives students a real-world opportunity with the same equipment that is used throughout the food industry.
- \* Special education areas feature two calming rooms and a ceiling lift on a tracking system to transport students throughout their rooms. There is also a full-service kitchen for life skills that is ADA-accessible.
- \* Teaching staff will experience a change with two collaborative spaces known as “Legends” and “Leaders.” Each staff member will have a small locker and the area is designed for meetings, casual conversation and relaxation between classes.



Classroom and flexible learning areas



Science Lab

## HIGH SCHOOL (9-12) SUBCOMMITTEE

- Tim Kachur (Lead), Associate Principal, NHS
- Marcy Bauman, Counselor, NHS
- Kaitlyn Bergmann, English, NHS
- Jennifer Cormier, English, NHS
- Amanda DeVries, Instructional Technology Coach, NHS
- Deb Garbe, Family and Consumer Education, NHS
- Elissa Gasparick, Special Education, NHS
- Gregg Goers, English, NHS
- Scott Herrting, Science, NHS
- Adam Hendries, Technology & Engineering, NHS
- Kelly Keating, Administrative Assistant, NHS
- Nate Koenecke, Math Intervention, NHS
- Chad Oeftger, Special Education, NHS
- Sarah Pennewell, At Risk, NHS
- Amy Rieder, Art, NHS
- Jesse Schettle, Science, NHS
- Liz Severson, Social Studies, NHS
- Chris Skogen, Math, NHS
- Eric Thiede, Social Studies, NHS
- Ryan Walter, Math, NHS
- Verity Weber, Special Education, NHS
- Molly Wilgreen, Community Member
- Scott Stielow, Community Member
- Brian Epley, School Board Member
- Isabel Hoffman, Student
- Dylan Knutson, Student



Autos classroom lift



# TECHNOLOGY



SMART panel technology

- \* SMART panels have been installed in most classrooms. These mobile, interactive touchscreens allow both educators and students to engage with educational content in unique ways. Students and staff will be able to wirelessly send content from their devices to these panels allowing for new ways to collaborate and share ideas.
- \* The school features a multitude of new security features. A unified door control system is integrated with electronic clocks and public address systems to automatically lock doors, convey visual and audio alarms, and immediately notify authorities of emergencies.
- \* A technology help desk will be staffed throughout the school day by the Student Technology Team. The help desk is a convenient option for staff and students to get immediate technology support and for students to grow their interest in technology.
- \* A dedicated audio/video network was designed specifically to cater to the needs of our community, including athletic events and fine arts performances. With this advanced network, Neenah High School can professionally handle the demands of live streaming, production and recording, enabling seamless distribution of content and capturing memorable moments throughout the campus. The network is separate from the existing wireless network, freeing capacity throughout the District.
- \* A new fiber loop was installed to connect all District schools together on one high-speed network. The loop was completed outside of referendum funding.
- \* Many of the photos and trophies on the walls have been replaced by touchscreen monitors in the spirit concourse and performing arts center lobby. Users can experience various aspects of Neenah history, including class photos, Hall of Fame inductees and state champions.



Video screens in all conference areas



Student technology help desk area

## TECHNOLOGY SUBCOMMITTEE

- Rocco Marchionda (Lead)**, Instructional Systems Analyst and Manager  
**Katherine Conor**, Middle School Instructional Technology Coach  
**Andy Dubey**, NJSD Network Manager  
**Jen Hager**, English, NHS  
**Samantha Johnson**, Social Studies, Shattuck  
**Austin Moore**, Elementary Instructional Technology Coach  
**Dan Putman**, Computer Science / Coding, NHS  
**Neal Pynenberg**, IT Systems Analyst and Manager  
**Dianne Underhill**, Math, NHS  
**Rustin Keller**, Community Member  
**Paul Schwartz**, Community Member  
**Lauri Asbury**, School Board Member



Integrated clocks and PA systems





## ▲ First Floor

One of the primary features of the first floor is the prominence of the technical education, art, and family and consumer education spaces directly off the main hallway and the atrium. Two academic wings, labeled Progress (west) and Wisdom (east) are each connected by science labs in the central section of the wings. The kitchen features a live-cooking area to give students control over their menu choices and allow for creativity.

There are also distributed dining areas in each wing. The west wing features a “grab and go” market area and the east wing has a coffee shop theme with cold food options and specialty coffees. The spirit concourse on the south of the building leads to the football stadium and divides the athletics and fine arts areas.





Similar to the first floor, each academic wing features a science lab in the central sections of the wings, labeled Honor (west) and Vision (east). Remote dining areas are also available on the second floor overlooking the courtyards. The library is in the central section of the building with large windows on each side, overlooking the central courtyard to the north and the atrium to the south.

The staff areas are labeled the Communities of “Legends” and “Leaders” and feature meeting rooms, private work areas, lockers, and relaxation and collaboration areas. The hallways and balconies around the competition gym provide for a running track.

## ▼ Second Floor



# PERFORMING ARTS



Performing Arts Center

- \* A state-of-the-art auditorium has seating for over 800 with plenty of ADA accommodations. The auditorium is one of the first among high schools in the Midwest to feature a fully-immersive sound system, providing a natural, lifelike three-dimensional sound experience unmatched in traditional sound systems. The sound system also includes a hearing loop for hearing-impaired individuals.
- \* The stage features a 70-foot high fly system for changing sets throughout a performance. There is also a full band shell for improved sound quality during band concerts.
- \* Music rooms for band, choir and orchestra have backstage access and fully-integrated sound with the auditorium, allowing for remote performances. The orchestra room features a humidity moderator to preserve instruments and a music “commons” area has soft-sided furniture and carpeting for students to gather.
- \* The black box theater includes a fully-functioning production booth and will seat about 200 spectators in flexible seating options for performances. The room has a full lighting grid and can be used for a wide variety of events outside of theater performances.
- \* The auditorium lobby is larger than that of Pickard Auditorium and will be able to be used for pre- and post-event gatherings. Outside the lobby, an intimate outdoor performance area has been created in sunken concrete.
- \* Two “Juliet balconies” have been installed on each side of the stage, allowing for additional performance options.
- \* Two fully-equipped green rooms have been created for performers to prepare before taking the stage.



Band room



Performing Arts Center lobby

## PERFORMING ARTS SUBCOMMITTEE

- Chad Buboltz**, Director of Learning and Leadership  
**Katie Bauer**, Band & General Music, Shattuck  
**David Dunning**, Instrumental Music, NHS  
**Jason Fridley**, Special Education, Horace Mann  
**Aaron Hoffmann**, NHS Pickard Auditorium Theater Manager  
**Thad Kraus**, Computer Technician, Middle Schools  
**Bill Richardson**, Associate Principal, NHS  
**Phil Smyth**, Music/Orchestra, NHS  
**Amy Westcott**, Choral Music, Vintage Show Choir, Madrigals, Musical, NHS  
**Cheryl White**, Choir, Act II Director, Music Dept. Chair, NHS  
**Kathleen McCurdy**, Community Member; Musical Director, NHS  
**Gary Lemieux**, Community Member  
**Carol Hollar-Zwick**, School Board Member  
**Alicia Zhang**, Student  
**Caleb Youngwerth**, Student



Outdoor performance area



# ATHLETICS / RECREATION



- \* Students in athletics and physical education will benefit from top-notch facilities that include an 8,691-square foot weight room with 48 benches that overlooks the football stadium.
- \* Physical education courses will also use two gymnasiums. A two-court competition gymnasium seats about 3,000 spectators for basketball, volleyball and wrestling events. The gym may be accessed from the first or second level and a running track surrounds the facility. Another 25,684-square foot gymnasium features four basketball and volleyball courts that will be available for practices and games when events are taking place in the competition gym. The gym is adjacent to a wrestling room that includes three mats. Both gyms and the wrestling room feature natural lighting.
- \* A new stadium is the most gleaming athletics feature. Seating 3,580 fans with plenty of standing room in patio and plaza areas for hundreds of more spectators, the stadium is up close to the school and features an artificial turf surface as well as a 1600-meter track for daily physical education use. The video board was relocated from the previous stadium and concession stands adorn each end of the grandstand. Storage bays under the grandstand will be ideal for the outdoor sports and physical education. The field is lined for football, soccer and lacrosse. Efficient LED lighting has been installed to minimize light pollution and glare.
- \* The outdoor facilities include two baseball diamonds, two softball diamonds and a soccer stadium. There are eight tennis courts with bleacher seating as well as two irrigated football practice fields and one irrigated soccer field. Additional greenspace offers plenty of other practice opportunities and the entire complex will be circled by a cross country course.



Weight room



Competition gymnasium



Four-station gymnasium



Outdoor athletic facilities

## ATHLETICS/RECREATION SUBCOMMITTEE

**Mike Elkin (Co Lead),** *Activities Director*  
**Jon Joch (Co-Lead),** *Director of Revenue Enhancement & Business Services*  
*Support*  
**Emily Bennett,** *Science, NHS; Girls Volleyball Coach, NHS*  
**Lisa Dohr,** *Admin. Assistant for the Activities Director, NHS*  
**Steve Jung,** *Science, NHS; Football Coach, NHS*  
**Kyle Kleuskens,** *Physical Education, Lakeview; Wrestling Coach, NHS*  
**Lisa LeMahieu,** *Health and Physical Education, NHS*

**Lee Rabas,** *Physical Education, Clayton; Boys Basketball Coach, NHS*  
**Dave Sonnabend,** *Associate Principal, Shattuck*  
**Brian Wunsch,** *Grounds, NHS*  
**Amy Nasr,** *Community Member*  
**Jack Taschner,** *Community Member; Baseball Coach, NHS*  
**Pete Kaul,** *School Board Member*  
**Maria Sorensen,** *Student*  
**Payton McClowry,** *Student*



# SUSTAINABILITY / OPERATIONS



Distributed dining area



Library study area

## SUSTAINABILITY SUBCOMMITTEE

**Andrew Thorson (Lead)**, Director of Business Services  
**Ricky Anderson**, District Mechanic  
**Nathaniel Blood**, Science, NHS  
**Luke Diedrich**, Supervisor of Operations  
**Dave Farin**, Adaptive Physical Education, Clayton/Taft  
**Chris Jones**, Science, Shattuck  
**Jared Schmidt**, Operations, Horace Mann  
**Dave Westfahl**, District Mechanic  
**Stefanie Holt**, School Board Member



Air system in welding area

- \* One of Neenah High School's most notable features is its use of natural light. Nearly every area of the building has some aspect of natural lighting. Some of the most prominent areas impacted are the hallway areas to the academic wings that feature distributed dining seating and the library that has large windows facing north.
- \* A geothermal heating and cooling system is comprised of a system of 354 wells that are each 405 feet deep under the parking lots. The wells contain underground loops of pipe that move liquid for heating and cooling. When the weather is cool, the liquid heats up to bring heat into the building. The system runs in reverse when the weather is warm, bringing cool air into the school and saving significant costs and fossil fuel use.
- \* The roof on the four-court gymnasium has been built to support solar panels in the future. There is also infrastructure in place for future electric car charging stations.
- \* Some rooms are equipped with daylight sensors that adjust the light level based on how much daylight is in the room. All of the rooms feature occupancy sensors to reduce energy use.
- \* Bike paths have been created throughout the property. The paths link to the bike path along County II and a proposed path on Larsen Road.
- \* Over 1.3 million yards of dirt were moved during the project and all of the dirt moved remained on site. Much of it was used to create hills for the cross country course on the property. A 12-acre retention pond was also constructed on the southeast side of the property.
- \* A state-of-the-art air handling system has been installed in the welding and autos classroom areas.



Geothermal heating/cooling system

## OPERATIONS SUBCOMMITTEE

**Adam Krieger (Lead)**, Director of Facilities / Engineer  
**Francis "Buddy" Diedrich**, District Grounds  
**Luke Diedrich**, Supervisor of Operations  
**Todd Klundt**, District Mechanic  
**Steve LeBoeuf**, Operations Manager, NHS  
**Dean Olkowski**, District Carpenter  
**Mike O'Neill**, Associate Principal, NHS  
**Steve Prosek**, Operations, Shattuck  
**Rick Voissem**, District Mechanic



# NEENAH MIDDLE SCHOOL



- \* The middle school will serve fifth and sixth grade students in the Conant section of the building on the north side and seventh and eighth grade students in the Armstrong wing on the south side of the school. The link section will consist of primarily fifth and sixth grade rooms.
- \* In the Conant wing, two former science labs have been reconstructed into four fifth grade classrooms. The fifth grade rooms have been equipped with age-appropriate furniture.
- \* Common learning spaces have been created in Conant, including a Makerspace and satellite library. The food and art rooms have each been remodeled into two classrooms and an art/math classroom area was also made into two classrooms. The classrooms are connected for increased flexibility.
- \* The cafeteria underwent a remodel with a larger kitchen to serve more students and a dividing wall so that fifth and sixth grade students will dine on one side and seventh and eighth grade students will eat on the other.
- \* In the Armstrong wing, a lecture pit and science rooms have been transformed into five classrooms with a common learning space area.
- \* The technology wing underwent major changes with the construction of two science labs, a family and consumer education kitchen, two art rooms, new technical education areas and additional common learning spaces.
- \* The counseling offices will be located in the link, but two self-regulation rooms have been created on each end of the building to assist students closer to their classrooms.
- \* The fieldhouse and outdoor athletic facilities will continue to be used by middle school and youth programs.



Grade 5 classroom areas



Remodeled classroom in Conant

## INTERMEDIATE (5-6) SUBCOMMITTEE

- Steve Dreger (Co-Lead)**, Director of Learning & Leadership
- Jackie Muñoz-Ellmann (Co-Lead)**, Principal, Horace Mann
- Kayla Bloomstrand**, Science, Horace Mann
- Andy Braunel**, Social Studies, Horace Mann
- Mary Greene**, Grade 6 Math, Horace Mann
- Kim Gregory**, Grade 5, Lakeview
- Stephanie Levine-Rankin**, Counselor, Wilson
- Tami Malcore**, Science, Horace Mann
- Jessica Muller**, Music, Horace Mann
- Kristina St. Clair**, Community Member
- Betsy Ellenberger**, School Board Member



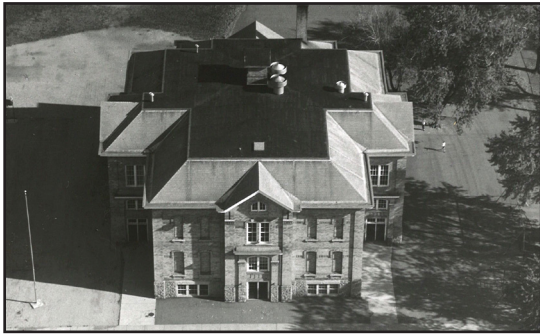
Armstrong learning commons area

## MIDDLE SCHOOL (7-8) SUBCOMMITTEE

- Kyle Popp (Lead)**, Associate Principal, NHS and Shattuck
- Doug Beattie**, Math, Shattuck
- Cami Czech**, Administrative Assistant, Shattuck
- Jeff Ferge**, Social Studies, Shattuck
- Jamie Lasee**, Counselor, Shattuck
- Melissa Mead**, Health/Physical Education, Shattuck
- Jenn McMahon**, Library Tech. Specialist, Horace Mann & Shattuck
- Jen Peterson**, ELA/At-Risk, Shattuck
- Brian Schalliol**, Computer Science/Coding, Shattuck
- Sarah Stecker**, Special Education, Shattuck
- Marc Goodman**, Community Member
- Dawn Bauer**, Community Member
- Deb Watry**, School Board Member



# NEENAH HIGH SCHOOL HISTORY



1879

Neenah High School held its first classes in the fall of 1875 on the site of the Current Washington School of Early Learning at Walnut and Franklin Streets. A larger school, which was later renamed Washington School, was built in 1879 at a cost of \$25,000.

1907



In 1907, the Kimberly High School building opened one block west of the previous high school on Commercial St. Named for school board president John A. Kimberly, the building later served seventh and eighth grade students and now houses the District's administrative offices.

1929



In 1929, a new High School opened on Division St. and was later named for S.F. Shattuck, who donated the land for the property. Academic wings were constructed in 1953 and a gym was added in 1955. The building later served as a junior high and a middle school until 2023.

1972



A high school named for astronaut Neil Armstrong opened on Tullar Road in 1972. The building served students in grades 11 and 12 with students in grade 10 attending the nearby Conant Junior High. The buildings were later both used as Neenah High School for grades 9-12. An adjoining "link" was constructed in 1995. It has been renamed Neenah Middle School in 2023-24 and will house students in grades 5-8.

2023



A 2020 referendum provided funding for a purchase of 225 acres of land and new high school that will open in the fall of 2023 on Winchester Road in the Village of Fox Crossing.



# THANK YOU!

Our community came together in April 2020 to support all of our Neenah Joint School District students with a successful referendum that will change the future of our District. We are incredibly grateful to everyone who contributed their time and energy to make this happen. Our Board of Education and District administrative team were unanimous in their support and promotion of this plan, but it could not have happened without the hard work of so many others. Thanks to everyone who helped in making this happen for our children, staff, and the entire community. This a special example of Neenah With Pride!

Below is a list of businesses that publicly supported the referendum as well as individuals who were members of the "Vote Yes" team. There are undoubtedly countless others who also provided their support and we thank you. This is what makes Neenah such a great community!

## BUSINESS SUPPORTERS

Align Chiropractic  
Paul Hartman - American Family Insurance  
Bergstrom Automotive  
Big Bark Media, LLC  
Bill Paul Ltd.  
Brown Family Dentistry  
Cannovas Pizzeria  
Cranked Bike Studio  
Dawn Christensen - Century 21 Ace Realty  
Clover Chiropractic  
Coldwell Banker The Real Estate Group - Mary Bosio  
Coldwell Banker The Real Estate Group - Penny Miller  
Dentistry By Design Ltd.  
Ear, Nose and Throat Specialists of Wisconsin, SC  
Edward Jones - Financial Advisor: Troy Noel  
Element Creative, Epic A modern salon  
Fortitude Krav Maga  
Fox Valley Stone and Brick Co., Inc.  
Goggin & Goggin Law Firm  
Great Harvest Bread Co.- Neenah  
Greene's Pour House  
Gries Architectural Group, Inc.  
Historic Neenah Properties, LLC  
Keesler Orthodontics, S.C.  
Kramer Family Dentistry  
Luxe Fine Jewelry  
Lyons Fine Books  
Mom and Pop Toy Shop  
Morton Safety  
MPI Restoration Services  
Printron  
Radiance Spa  
Scanlan Studios  
Shellattés  
Dave Mader - State Farm Agent  
Josh Carter - State Farm Agent  
Stillings, Buchinger, and Swardenski LLC  
The Natural Boutique  
The Old Post Office  
The Revival Neenah  
Valley Spine & Sport  
Vision Architecture  
Westridge Golf Course



The 2019-20 Neenah Joint School District Board of Education developed the successful referendum plan through summer community listening sessions in 2019. Front Row (L to R): Carol Hollar-Zwick, Lauri Asbury, Stefanie Holt and Betsy Ellenberger. Back Row (L to R): Brian Epley, Deb Watry, Michelle Swardenski, Pete Kaul and Scott Thompson.

## VOTE YES TEAM

Michelle Dunning - core 2020 team  
Peg Feltz - core 2020 team  
Amy James - core 2020 team  
Katie Kearny - core 2020 team  
Julie Last - core 2020 team  
Amy Nasr - core 2020 team  
Carrie Stier - core 2020 team  
Molly Wilgreen - core 2020 team  
Nikki Winiecki - core 2020 team  
Scott Becher - 2020 contributor  
Casey Drach - 2020 contributor  
Summer Ennis - 2020 contributor  
Kendra Hall - 2020 contributor  
Sara Montonati - 2020 contributor  
John & Deb Skyrms - 2020 contributors



## In Memoriam Andrew Thorson (1981-2020)

Andrew served as the Assistant District Administrator of Business Services and played a major role in developing the 2020 referendum plan and funding formula to help make the Neenah High School project a reality. He was part of the Core Planning Team for the design of Neenah High School before being tragically struck by a hornet while working in his yard on August 2, 2020.

Andrew died on August 15, 2020. A memorial tree has been placed outside Neenah High School in his honor.

This publication was designed and edited by NJSD Communications Director Jim Strick with assistance from Miron Construction and Bray Architects. Photos courtesy of Graham Washatka of Graham Images.



**Forward  
Together**

Building Neenah with Pride