



A Message from Dr. Pfeiffer

Welcome to the 2012-2013 school year! It is hard to believe that fall is here and winter is around the corner. We are off to a fantastic start. In this edition of the Dialogue, I would like to address several advancements in our four District focus areas: Communications; Curriculum-Instruction-Assessment; Supervision and Evaluation; and Resources.

1. Communications - Over the past year, our focused Communications Committee has worked diligently to develop an effective plan for our District. As a starting point, we have developed what we call a "Fact Sheet" where, throughout the school year, points of information will be shared with our staff, families and community members. As an example, the first Fact Sheet of the school year relates to "Changes in the Evaluation System and Salary Scales." Following a description of the project, there will be a question and answer section in order to facilitate input and develop additional clarity. This information can be found at: neenah.k12.wi.us/district/superintendent.cfm.

2. Curriculum, Instruction, & Assessment - In this edition of the Dialogue, several new points of information will be provided concerning the new report card in Wisconsin. The Department of Public Instruction (DPI) released the information this month and although there is always room for improvement, we are very pleased with our scores. There are several changes compared to the previous report including the following:

(a) A grade is given to individual schools with a point value between 0-100.

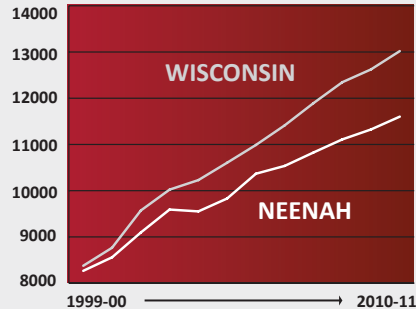
(b) Previous Wisconsin Knowledge and Concepts Exam (WKCE) test scores for mathematics and reading have been converted into National Assessment for Educational Progress (NAEP) scores. As indicated on the DPI website and starting in 2011-12, schools are being held to a higher college and career readiness proficiency benchmark by aligning the cut scores of the WKCE to those of the NAEP. The higher cut scores have been retroactively applied to show trends.

(c) Priority areas on all report cards include: Student Achievement, Student Growth, Closing Gaps, and On-Track and Post-secondary Readiness.

(d) Student engagement indicators are also identified and a school's relative score will reflect if the indicators are met or not.

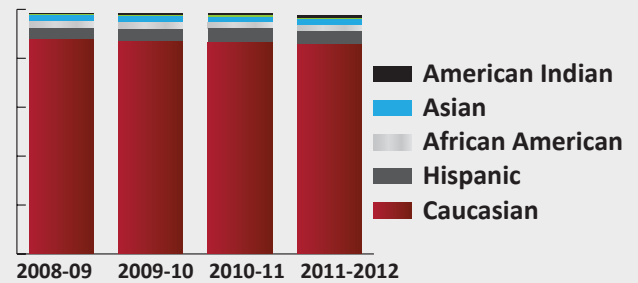
(continued on page 12).

Expense Per Student is Rising Expressed in \$ per Student



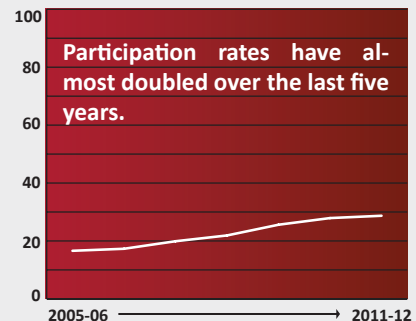
Despite rising costs, Neenah continues to spend less per student than the State of Wisconsin, and the gap is widening.

Demographics - Ethnicity



Ethnic Category	2008-09	2009-10	2010-11	2011-12
American Indian	42	38	28	28
Asian	176	162	155	156
African American	162	166	155	148
Hispanic	284	330	363	368
Caucasian	5,709	5,652	5,626	5,560
2 or more	18	37	60	76
TOTAL	6,391	6,385	6,387	6,336

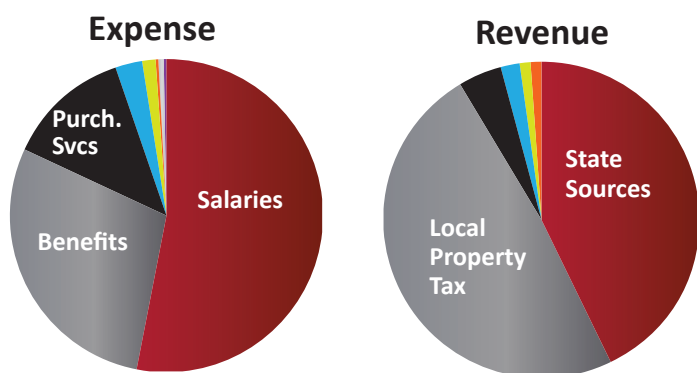
Free & Reduced Lunch Expressed in % of Students



Participation in free and reduced lunch programs increased from 16.6% in 2005-2006 to 28.7% in 2011-2012.

Distribution of Expenses & Revenues

A look at NJSD's 2011-12 Budget



1. Expense

Funds 10 & 27 Combined - in \$ unless otherwise noted				
Categories	Fund 10	Fund 27	Total	Percent
Salaries	28,486,226	5,943,619	34,429,845	53.29%
Benefits	14,900,613	3,621,054	18,521,667	28.67%
Purchased Services	6,438,608	1,853,705	8,292,313	12.84%
Non-Capital Objects	1,791,336	112,547	1,903,883	2.95%
Capital Objects	657,790	112,092	769,882	1.19%
Debt Retirement	298,446	0	298,446	0.46%
Insurance - Property Liability	226,426	0	226,426	0.35%
Other Objects	160,622	0	160,622	0.25%
Total	52,960,067	11,643,017	64,603,084	100%
Operating Transfers Out (OTO)	7,369,974	0	7,369,974	---
Adjusted Total	60,330,041	11,643,017	71,973,058	---

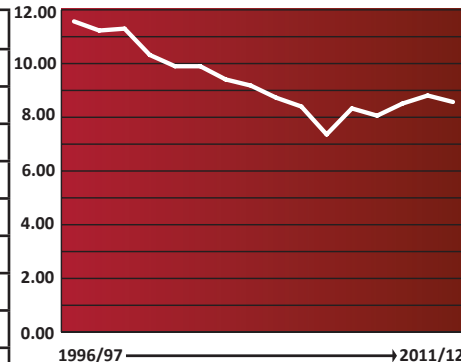
2. Revenue

Funds 10 & 27 Combined - in \$ unless otherwise noted				
Categories	Fund 10	Fund 27	Total	Percent
Local Property Tax	28,936,835	0	28,936,835	43.22%
Other Local Sources (Fees, Interest)	670,690	0	670,690	1.00%
Interdistrict (Open Enrollment)	1,250,214	69,605	1,319,819	1.97%
State Sources	30,197,478	2,691,306	32,888,784	49.12%
Federal Sources	971,053	1,511,342	2,482,395	3.71%
Other Revenue	657,200	790	657,990	0.98%
Total	62,683,470	4,273,043	66,956,513	100%
OTO	0	7,369,974	7,369,974	---
Adjusted Total	62,683,470	11,643,017	74,326,487	---

NJSD Tax Rate per \$1,000 (TRPT)

Among the Lowest TRPT in the Fox Valley!

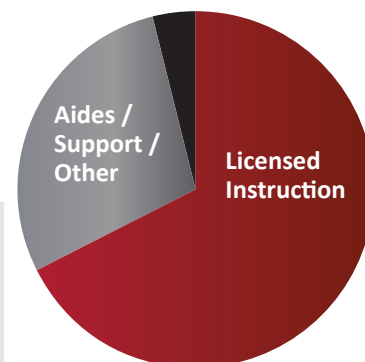
Year	TRPT	Change
96-97	11.57	---
97-98	11.23	-2.94%
98-99	11.30	0.62%
99-00	10.32	-8.67%
00-01	9.90	-4.07%
01-02	9.90	0.00%
02-03	9.41	-4.95%
03-04	9.18	-2.44%
04-05	8.73	-4.90%
05-06	8.40	-3.78%
06-07	7.36	-12.38%
07-08	8.33	13.18%
08-09	8.06	-3.24%
09-10	8.51	5.58%
10-11	8.81	3.53%
11-12	8.57	-2.72%



From 1996 until the 2011-12 school year, our tax rate has decreased by \$3 per \$1000. In spite of a declining school property tax rate, NJSD achievements have continued to "skyrocket," - strong credit to a talented team of educators, students, school board members, staff, parents, and community all dedicated to excellence!

NJSD Staffing Ratios 2011-12

- Licensed Instruction
- Aides / Support / Other
- Administration



Did you know?....

125 of our combined staff have BA's, 327 have MA's, and 3 have PhD's.

Staffing Ratios 2011-12				
Staff Type	District	District % of Total FTE	District Pupil to Staff Ratio	State Pupil to Staff Ratio
Licensed Instruction	412.6	67.6	15.2	13.3
Administration	23.0	3.8	272.8	248.9
Aides/Support/Other	174.9	28.6	35.4	27.6
Overall Totals	610.5	100	10.3	8.7

Neenah High School (NHS)

Neenah High School is considered a large school with an approximate enrollment of 2,100 students and a dedicated teaching staff of 130 supported by an additional 70 adults on our 60 acre campus. The school calendar year consists of two semesters, each 18 weeks in length. Neenah High School is accredited by the Wisconsin State Department of Public Instruction. In addition, Neenah High School is the recipient of the Excellence in Education Award from the U.S. Department of Education.

Curriculum

NHS offers a diversified curriculum to meet the needs of students of all abilities. Course selections include standard and advanced classes. Alternative programs are available on the campus and in the community. In addition, numerous other courses are available for college credit through local or neighboring colleges and universities.

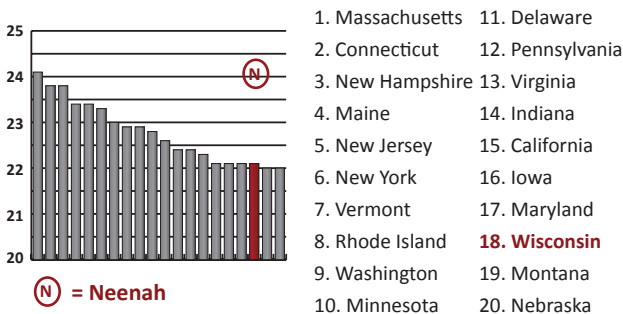
Graduation Requirements

A total of 23 credits is required for the 2013 and 2014 graduating classes, 22 credits for the class of 2015, and 22.5 credits for the class of 2016, including the following:

Subject	Neenah	State
English	4.0	4.0
Math	3.0	2.0
Science	3.0	2.0
Social Studies	*3.5	3.0
Physical Education	1.5	1.5
Practical & Fine Arts	0.5 each	0.5 Fine Arts
Health	0.5	0.5
Personal Financial Literacy (PFL)	*0.5	0.0
Minimum Electives	6.5	8.5
TOTAL	23	22

* 2015 and beyond - 3.0 for Social Studies & 0.5 PFL

Top 20 2012 ACT Scores by State

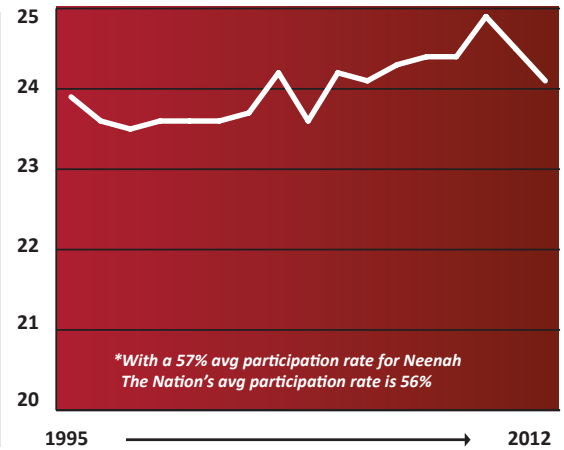


Neenah's 2012 average composite score of 24.1 matched the Nation's #1 average - Massachusetts, and for the last 5 and 10 year averages ranks among the top 2.6% of the 431 districts in the State of Wisconsin.

ACT Composite Score Profiles, 1995 - 2011

A Glance at NHS' Historical & Recent Trends

Originally, ACT stood for "American College Testing." In 1996, however, the name was changed to ACT. Many post secondary institutions utilize ACT as tools for admission decisions. ACT scores four subject areas: English, Mathematics, Reading, and Science. Scores range from 1 (low) to 36 (high).

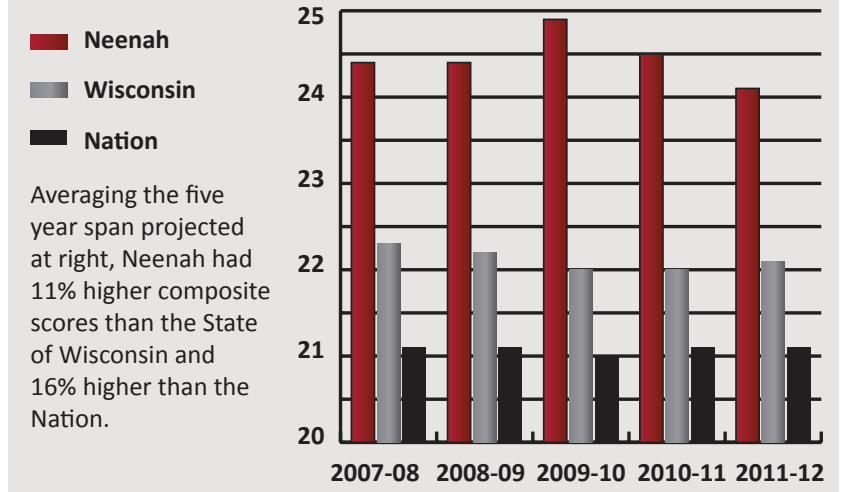


A composite score is the average of the four (4) test scores. Neenah's average composite score continues to rank as the highest performing school district in the Fox Valley.

ACT vs SAT?

In a 2009 National Association for College Admission Counseling survey with 246 colleges/universities responding, 81% indicated they used ACT as a tool for admission decisions, 73% indicated they used the SAT (formerly known as the Scholastic Aptitude Test), and 89% indicated that they used one test or the other. For more info see the full study at nacacnet.org/research/research-data/Documents/TestPrepDiscussionPaper.pdf, or ivybound.net/act/actvssat.html, or huffingtonpost.com/mobileweb/alex-mallory/sat-vs-ct-choose-wisely_b_830093.html, or for a somewhat dated but still useful New York Times article see nytimes.com/2007/11/04/education/edlife/guidance.html?pagewanted=all. Practice tests for both the ACT and SAT can be found as iPad apps or online at Princetonreview.com, Petersons.com, and Ivybound.net. The College Board also provides practice SAT tests as well as questions of the day accessible via its webpages.

ACT profile, Neenah vs. Wisconsin vs. Nation Average ACT Composite Scores



About Advanced Placement (AP)

According to the College Board, most four-year colleges in the United States and colleges in more than 60 other countries give students credit, advanced placement, or both on the basis of AP exam scores. By taking an AP exam (designed by the College Board of Princeton, New Jersey), students are given an opportunity to demonstrate that they have mastered the concepts of the college level course. Students are not required to take a course in order to take an AP exam, but it is highly recommended. Each exam fee is \$89. Check with specific universities or colleges to ensure credit will be given prior to taking the course or exam.

For a directory of universities and colleges and their AP acceptance policies see:

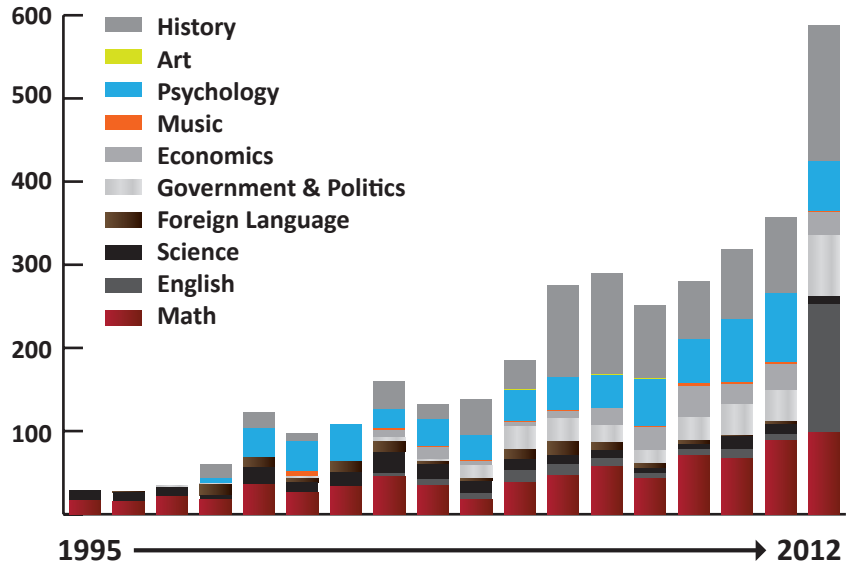
collegesearch.collegeboard.com/apcreditpolicy/index.jsp

For an example of the University of Wisconsin - Madison's policy regarding AP acceptance see:

admissions.wisc.edu/apib.php

UW-Madison generally gives credit for scores of 3, 4, or 5. Check with the website above for more details per subject area.

AP Exams Taken Over Time, 1995 - 2012 A Glance at Historical & Recent Trends



Cooperative Academic Partnership Program (CAPP)

Another advanced learning opportunity is through Cooperative Academic Partnership Programs (CAPP). According to the University of Wisconsin - Oshkosh, "the difference between CAPP & AP courses is that CAPP courses are college courses while AP are college-level courses designed to prepare students to take an examination. Since students can take the AP examination after taking a CAPP course, the CAPP courses serve both those students who can score highly on AP and those who cannot but would earn a passable grade for college credit." NHS offers several AP & CAPP courses which are listed in our Course Description Guide.

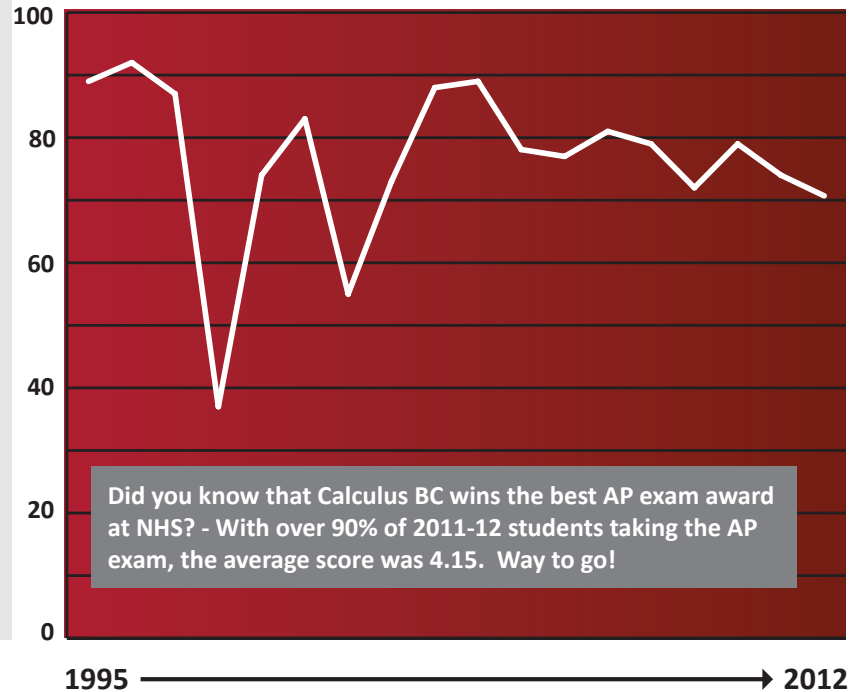
For more information see:

uwosh.edu/capp/parents or uwosh.edu/cols/special-programs/capp/q-a/CAPP_diff/documents/AP_CAPP_difference_explanation.pdf

For an additional listing of CAPP courses provided in the area or online see:

uwosh.edu/cols/special-programs/capp/on-line-courses-capp

Scoring 3, 4, or 5 on AP Exams Expressed in % of Students



Did you know that Calculus BC wins the best AP exam award at NHS? - With over 90% of 2011-12 students taking the AP exam, the average score was 4.15. Way to go!

AP Courses offered at NHS

AP courses offered at NHS include:

AP English Language and Composition	AP English Literature and Composition	AP Microeconomics	AP Comparative Government and Politics	AP Spanish Language
AP Calculus AB	AP European History	AP Psychology	AP Human Geography	AP Studio Art 2D Design
AP Calculus BC	AP French Language and Culture	AP United States History	AP US Government and Politics	AP Studio Art 3D Design
AP Biology	AP Macroeconomics			

Advanced Course and Standings Offerings at NHS

Neenah High School's list of advanced course offerings as well as Fox Valley Technical College "advanced standing" courses are listed below. These courses are used in the calculation for laude recognition. Some courses listed below have additional requirements for meeting laude status.

<p>English Adv. English 9 Adv. Literature / Composition 10 Adv. American Literature 11 Persuasive Essay AP English Language and Composition AP English Literature and Composition Advanced Theater Studies</p>	<p>Math Adv. Geometry Adv. Algebra 1 and 2 AP Calculus AB AP Calculus BC Statistics and Probability Pre-Calculus Calculus 3 Linear Algebra</p>	<p>Science Adv. Physical Science 9 Chemistry Study Adv. Chemistry Adv. Biology AP Biology Adv. Physics Adv. Physics Concepts</p>
<p>Technology & Engineering Computer Aided Architectural Drafting Computer Troubleshooting and Servicing 2 Automotive Technology 1-4 Intro to Engineering Design Principles of Engineering Electronics Digital Electronics</p>	<p>Social Studies Adv. Global Studies 9 Adv. Modern World History AP European History AP Psychology AP Macroeconomics AP Microeconomics AP United States History AP US Government and Politics AP Comparative Government and Politics AP Human Geography</p>	<p>Business Web Page Design Finance Computer Applications 1 and 2 Management Business Law Accounting Marketing 2 Office Administration</p>
<p>World Languages French 3, 4, and 5 German 3, 4, and 5 Spanish 3 and 4 AP Spanish Language AP French Language and Culture</p>	<p>Art Art 3 A and B Professional Portfolio Preparation AP Studio Art 2D Design AP Studio Art 3D Design Art Survey Art 4</p>	<p>Music Adv. Music Theory Adv. Jazz Ensemble Wind Symphony Symphony Orchestra Adv. Chamber Choir</p>
<p>FACE Health Careers 1 Food Service Certified Nursing Assistant Assistant Childcare Teacher - ACCT</p>	<p>Career Courses Introduction to Education as a Career Leadership</p>	<p>Wellness Education Lifeguard Training / CPR</p>

Class of 2012 Graduate Plans - What Do Students Plan Next?

65% 4- and 2- Year Universities	19% Technical College	3% Military	2% Direct Employment	11% Other
--	------------------------------	--------------------	-----------------------------	------------------

Graduates of the Class of 2012 were accepted at the following universities and colleges:

<p>Out of State Universities and Colleges</p> <p>Bates College Boston College Brigham Young University Colorado State University East Carolina University Eckerd College Graceland University Gustavus Adolphus College Hamline University Iowa State University Kendall College</p> <p>Knox College Macalester College McGill (Canada) University Michigan Technological University Moody Bible Institute Penn State University Princeton University Purdue University Stony Brook University Taylor University University of Chicago</p> <p>University of Tampa University of Minnesota University of North Carolina University of St. Thomas University of Southern California United States Military Academy West Point Military Academy Vanderbilt University Wheaton College Winona State University</p>			<p>University of Wisconsin System</p> <p>Eau Claire Fox Valley Green Bay La Crosse</p> <p>Madison Milwaukee Oshkosh Platteville</p> <p>Stevens Point Stout Whitewater</p>		
<p>Other Wisconsin Universities and Colleges</p> <p>Carthage College Carroll University Edgewood College</p> <p>Fox Valley Technical College Institute of Beauty & Wellness Marian University</p> <p>Marquette University Milwaukee Institute of Art and Design</p> <p>Milwaukee School of Engineering (MSOE) Ripon College</p> <p>St. Norbert College Viterbo University Wisconsin Lutheran College</p>					

Horace Mann Middle School Notable Achievements

Horace Mann Middle School's 2011/12 goal for sixth graders was for **95% of our students to score at seventh grade or higher on reading comprehension** and **75% of our students to score at seventh grade or higher on the vocabulary section.**

411 non-special education students were tested with the following results:

397 students (96.59%) scored at 7th grade or higher on Reading Comprehension- amazing work!

313 students (69% which is up from 48% last year) scored 7th grade or higher on Vocabulary of the Diagnostic On-line Reading Assessment: DORA.

300 total students (66%) scored at the 10th grade or higher on comprehension and 222 (48%) of our students scored at the 12th grade level!

47 special education students were in our programs last year:

39 of those students tested below grade level at the start of the year.

32 of those 39 students (82%) grew by 2 plus (or more) years!

30 of our 47 students (63%) left Horace Mann reading at their grade level!

These amazing results have much to do with the cooperative efforts of talented and dedicated Special Education instructors and their Educational Assistants with the entire staff to boost reading levels of all children at Horace Mann. The entire staff has embraced the Reader's Workshop model with best practice instruction from an on-site literacy coach to bring this all together.

GET CONNECTED!



Like our Neenah Joint School District Facebook page or sign up on Twitter and get updates on news across the District!

OR... Visit our website(s). All schools have news updates or newsletters including our District's home page. Check out school pages for more information.

OR... Sign up for email updates via our District's Contact Us page!

SIGN UP FOR ALL AND YOU'LL KNOW FIRST!

Rockets Banking Paying off for the District!



We're happy to report that our new **"Rockets Banking" partnership with Associated Bank** has already generated nearly **\$7,000 in contributions** within the first four months for our District. Launched in May, Rockets Banking is a program sponsored by Associated, in which the Neenah Joint School District receives donations every time a parent, student, faculty member, alumni, or any supporter of the Neenah Joint School District enrolls in the program. Enrollment is open to both new and current customers of Associated Bank and all members receive a free Rockets Banking Debit Card.

Enrolling in Rockets Banking is easy. **Just stop by Associated Bank's branch at 100 W. Wisconsin Avenue, anytime after November 9 at Festival Foods in Neenah, or anytime before December 13 at their Pick 'n Save Branch at 828 Fox Point Plaza and let them know that you'd like to become a member of Rockets Banking.** Associated Bank will then start making contributions to the District just for becoming a member. **If you are a new member to Associated Bank, the bank will also make additional donations for every checking, savings, money market, or certificate of deposit account that you open.** The more you bank with Associated, the more they donate to our schools.

"The Rockets Banking program has been a source of additional revenue for the District," said Jonathan Joch. **"Funding for our schools has become a serious concern for districts all over the state and Associated Bank's program is a creative way to fill in the gaps and continue to help to take the pressure off of taxpayers,"** said Joch.

Whether you're already an Associated Bank customer or shopping for a new bank, stop in at Associated Bank and join Rockets Banking today.

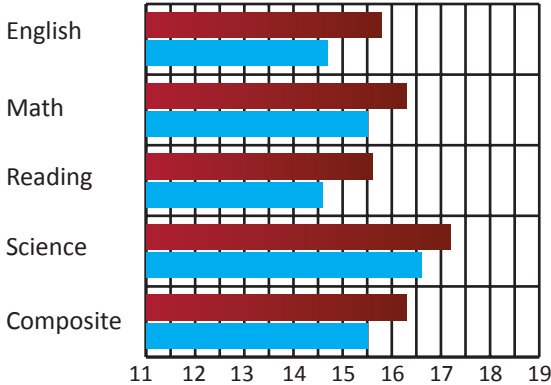
Your enrollment will help to provide funding for the Neenah Joint School District for years to come.

Shattuck Middle School ACT Explore Test

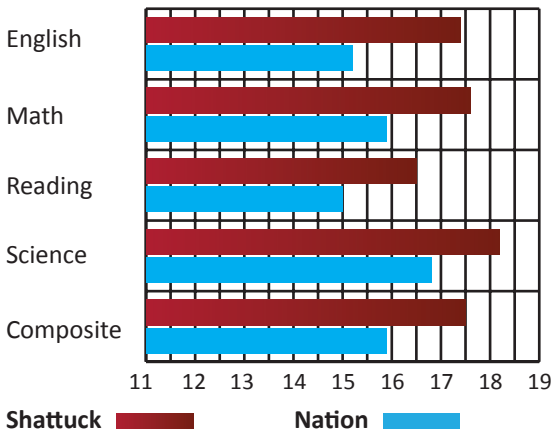
The 2011-12 school year marked a second for Shattuck Middle School with 100% testing via the ACT Explore test. That puts Neenah ahead of the curve, because Wisconsin State Superintendent Evers just recently announced plans to utilize the suite in his 2013-2015 education budget. Explore, typically a 9th grade test, is used as a tool to help identify student strengths and weaknesses in four main benchmarks: English, Math, Reading, Science, as well as in a Composite. (A Composite score is the average of all four Benchmark scores.) The test has a career component as well and was designed to measure whether students are on track to be college ready when they graduate from high school. **There are 25 points possible for each category.**

Acceleration guidelines were set for the 2012-13 school year that permit all students to register for advanced coursework, (high school level classes taken at Shattuck), based on meeting four of the five criteria: (1) 3.8 or higher GPA, (2) 21 or higher Explore Composite Test score, (3) Explore benchmark score - Advanced English requiring a Reading benchmark score of 21 and Advanced Physical Science requiring a Math benchmark score of 21 or higher, (4) proficient in both 2010 WKCE Grade 7 Reading and Math tests, and (5) staff (teacher, counselor, or administrator) recommendation.

Average Shattuck 7th Grade Scores vs Nation



Average Shattuck 8th Grade Scores vs Nation



Notable Shattuck Explore Test Highlights

Seventh Graders

32% scored in the top 75th percentile nationally on this 8th grade test

71% scored in the top 50th percentile

56% scored at a level that indicates college readiness in reading

16 students scored a perfect score on the English test

4 students scored a perfect score on the Math test

14 students scored a perfect score in the Reading test

9 students achieved a perfect score on the Science test

2 students achieved a perfect composite score on the entire test

Eighth Graders

48% scored in the top 75th percentile nationally

74% scored in the top 50th percentile

67% scored at a level that indicates college readiness in reading

84% scored at or above the English benchmark score

57% scored at or above the Math benchmark score

24 students scored a perfect score on the English test

15 students scored a perfect score on the Math test

28 students scored a perfect score on the Reading test

19 students scored a perfect score on the Science test

3 students achieved a perfect composite score on the entire test

For more information about the Explore test see

www.act.org/explore/downloads.html

www.act.org/path/parent/tests/explore.html

Wellness and Community

Additional Emphases for Learning

Our Shattuck and Horace Mann Middle Schools set a student engagement goal to generate greater involvement in student activities. Seventy-seven percent of Shattuck Middle School students participated in AT LEAST one extracurricular activity. Extracurricular opportunities include academic, community-minded, and sports venues. Both schools offer most opportunities, check with each school for more information.

Academic opportunities include: Art Club, Battle of the Books, Chess Club, Debate, Drama, Forensics, Geography Bee, Jazz Band, Math Club, Newspaper, Solo & Ensemble, Spanish Club, Student Council, and Yearbook.

Community-minded opportunities include: B.L.A.S.T. (a leadership group dedicated to team building and positive choices), Strive 2B (a group of potential leaders selected by counselors to organize around school and community enhancement opportunities), School Store, Friendship Soup and the Salvation Army (students make soup and then serve it to less fortunate families in December), Student Council, and Teen Stop (encourages strong and positive relationships for students with cognitive disabilities and regular ed peers).

Sports opportunities include: Archery Club, Basketball, Cross Country, an annual Dodgeball tournament, Finatics Fishing Club, Football, Ski Club, Tennis, Track, and Volleyball.

Wisconsin Knowledge & Concepts Examination (WKCE)

Overview

The Wisconsin Knowledge and Concepts Examination (WKCE) is customized to measure the Wisconsin Model Academic Standards (WMAS) and is developed by the Department of Public Instruction and Wisconsin educators in conjunction with CTB/McGraw-Hill. The purpose of the WKCE is to provide information about student attainment of subject-area proficiency to students, parents, and teachers. This information supports curriculum and instructional planning and is a measure of accountability for schools and districts. Students in grades 3 through 8 and 10 take tests in reading and mathematics that are reported via the Wisconsin Student Assessment System (WSAS), information of which proceeds on the following pages. Students in grades 4, 8, and 10 take additional tests in language arts, science, and social studies via WKCE. Testing is administered to all students enrolled in Wisconsin public schools during the fall of each school year. More information can be found on Wisconsin's Department of Public Instruction's web page via dpi.wi.gov/oea/wkce.html.

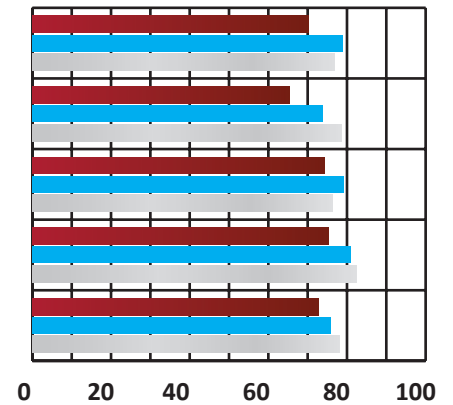
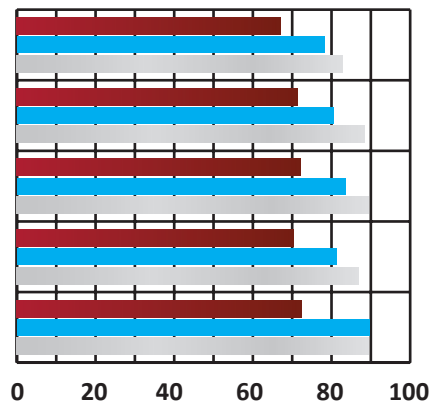
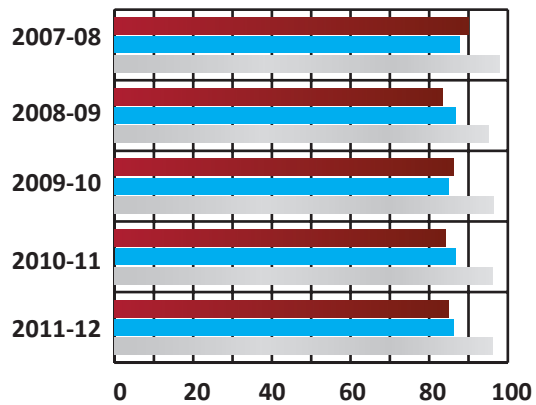
Beginning with the 2012-13 school year, Wisconsin established performance standards comparable to the National Assessment of Educational Progress (NAEP) scores for the WKCE reading and mathematics content areas. This change better aligns WKCE performance levels with national and international college and career-ready expectations. Due to this change, reading and mathematics performance level information from 2012-13 on cannot be compared with earlier years' performance level information. State percentiles and Student Growth Percentile Reports may be used to alternatively evaluate student progress over time. Performance standards for language arts, science, and social studies were not revised and so can still be compared to prior years. In the 2014-15 school year, the WSAS exams in reading and mathematics will be replaced by exams being developed by a consortia of states that are based on or linked to the Common Core State Standards. Plans are also underway regarding new assessments for science and social studies. These new assessments would also be available in 2014-15 but details are not yet determined. For more see dpi.wi.gov/oea/kce_q&a.html.

Neenah

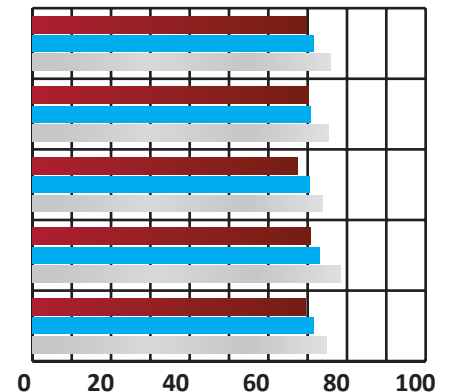
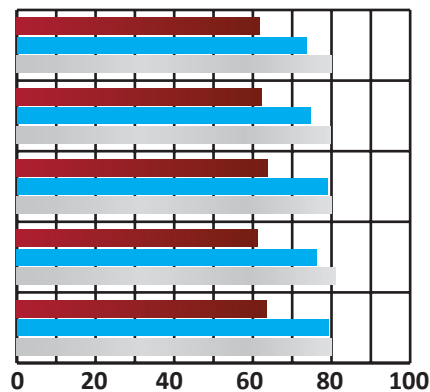
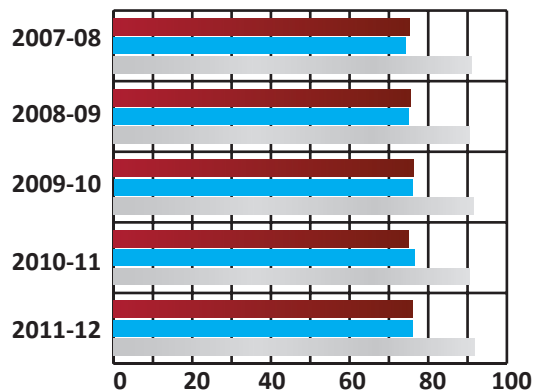
gr. 4

gr. 8

gr. 10



Wisconsin

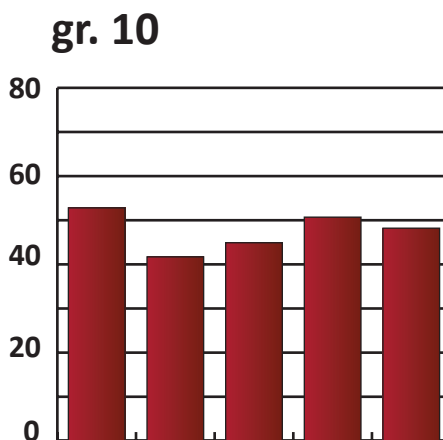
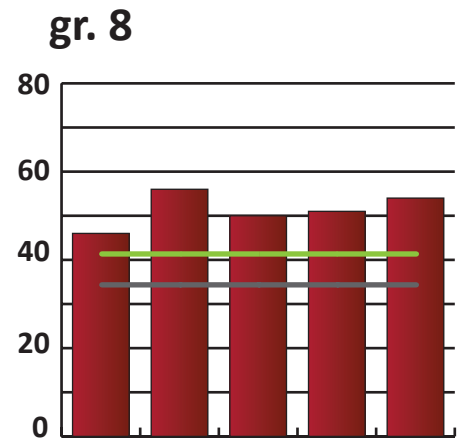
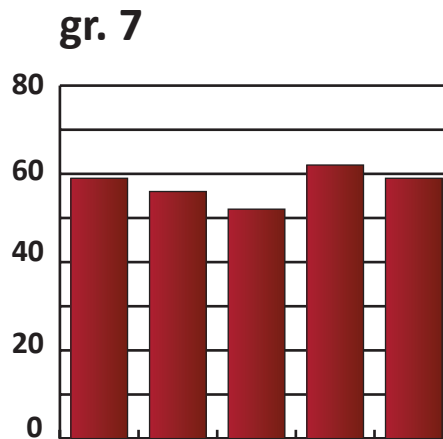
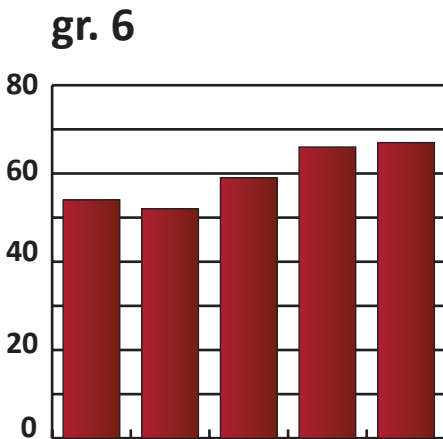
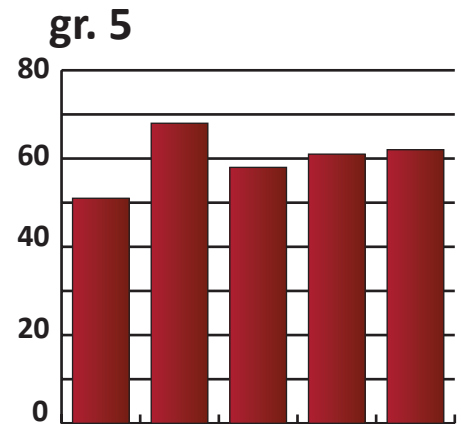
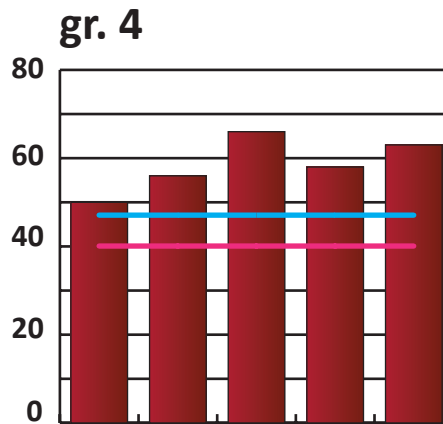
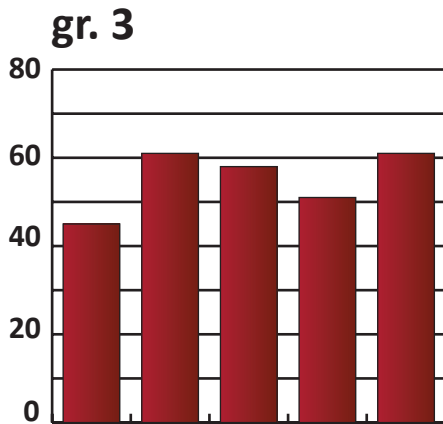


- Language Arts
- Science
- Social Studies

WSAS Mathematics - Grades as Numbered

2007-2008

2011-2012



About the WSAS - Wisconsin Student Assessment System

See page nine (9) of this issue for more on the WSAS. Additional resources include:

dpi.wi.gov/oea/kce_q&a.html - overview on WSAS as provided by the Department of Public Instruction

dpi.wi.gov/oea/pdf/parentguide.pdf - a guide for parents on Wisconsin's Model Academic Standards and the Wisconsin Student Assessment System

dpi.wi.gov/oea/publications.html - information center on WKCE, WSAS, and more

NJSD Mathematics Resources

For a listing of mathematics resources, please see Neenah's Academic Booster Club's (ABC) website - accessible from the Community pull-down of the NJSD site. Choose "Academic Booster Club" from the Community pull-down tab or page, then when in the ABC website, select "Educational Resources." Resources include: an example of a curriculum path outline for mathematics in NJSD courtesy of NJSD Instructors Rich Frost, Jill Hinkley, and Mark Schott. Also includes online resources in our Co-Curricular Enrichment pages for students to include listings of local organizations, classes, or clubs available to students that develop and encourage a love of mathematics.

Neenah
State Snapshot - gr. 4

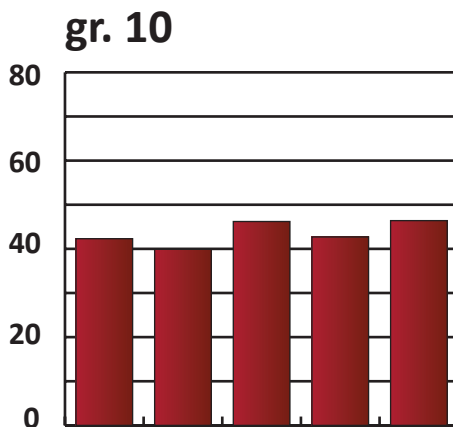
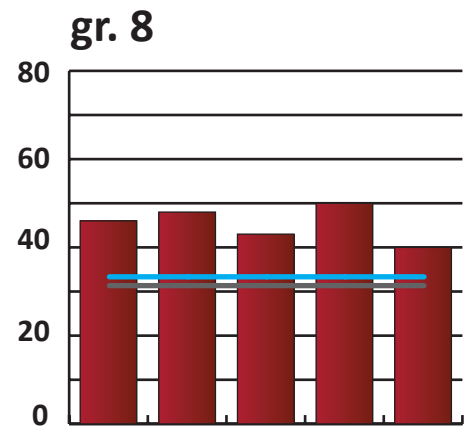
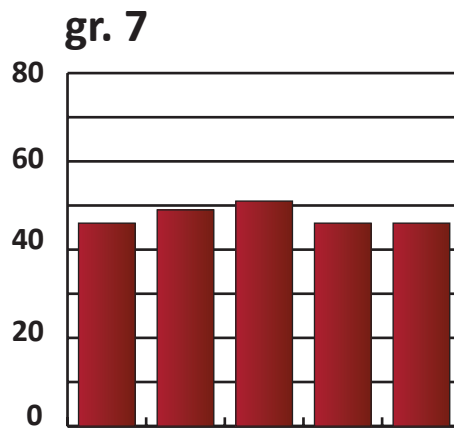
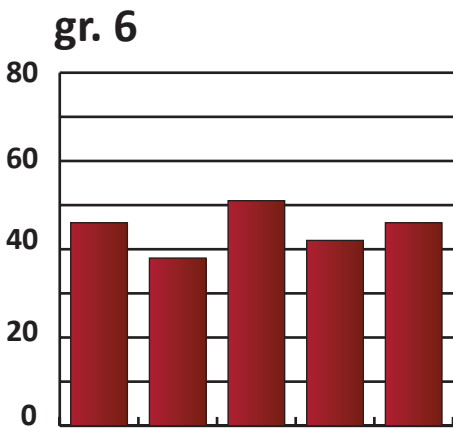
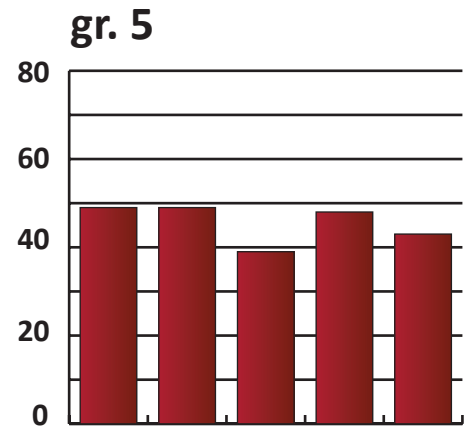
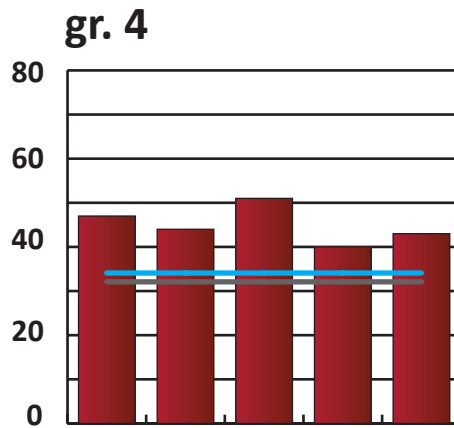
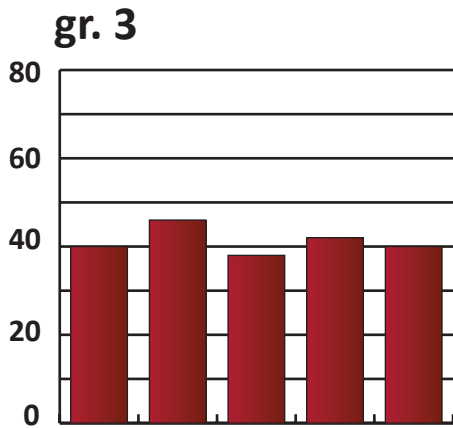
State Snapshot - gr. 8
Nation Snapshot - gr. 4

Nation Snapshot - gr. 8

WSAS Reading - Grades as Numbered

2007-2008

2011-2012



About the WSAS - Wisconsin Student Assessment System

See page nine (9) of this issue for more on the WSAS. Additional resources include:

dpi.wi.gov/oea/kce_q&a.html - overview on WSAS as provided by the Department of Public Instruction

dpi.wi.gov/oea/pdf/parentguide.pdf - a guide for parents on Wisconsin's Model Academic Standards and the Wisconsin Student Assessment System

dpi.wi.gov/oea/publications.html - information center on WKCE, WSAS, and more

NJSD Reading Resources

For a listing of reading & literacy resources, please see Neenah's Academic Booster Club's (ABC) website - accessible from the Community pull-down of the NJSD site. Choose "Academic Booster Club" from the Community pull-down tab or page, then when in the ABC website, select "Educational Resources." Resources include: helpful reading links from Reading Specialist Monica Schoen, District proficiency level expectations by grade with accompanying Scholastic's Guided Reading list, tips for all levels of readers, and a best reads list in cooperation with District GT Coordinator Val Cleveland and retired Magnet teacher Marcia Macdonald. Online resources are also available via ABC's Co-Curricular Enrichment pages for students with local organizations, classes, or clubs listings to help develop and encourage a love for literacy.



410 South Commercial Street
Neenah, WI 54956
(920) 751-6800
Website: www.neenah.k12.wi.us
Email: dialogue@neenah.k12.wi.us

A message from Dr. Pfeiffer (continued from page 1)

3. Supervision & Evaluation – Our goal is to develop solid, objective assurances that there are effective professionals in all schools and in all classrooms. Although this may seem simple, there are many factors to consider. This past summer, Neenah Joint School District joined several area school districts to work with our area **Cooperative Educational Services Agency (CESA)** to explore, and ultimately commit to, what is called the **Effectiveness Project**. This project is focused toward meeting the new DPI requirements for 2014-15. We are also looking to ensure that the highest quality professionals are with our students and that high performing teachers are paid accordingly. More information can be found at neenah.k12.wi.us/district/superintendent.cfm.

4. Resources – LONG-TERM DEBT IS DISAPPEARING!
We are proud to announce that the Neenah Joint School District is quickly positioning itself to have no long-term debt! Only \$50,000 will need to be levied this year to make the scheduled principal payment. Over the next six years, the District will levy a total of \$150,000 to cover the remaining long-term debt payments. There are very few governmental entities that can claim to be debt free. The Board of Education, along with our administrative team, continue to find positive solutions in these challenging times, always with a commitment toward

fiscal responsibility while providing a top-notch education for all students. Other great news includes:

Our staff is strongly committed to providing our students with the finest education in the state.

Class size average at the kindergarten and first grade elementary level and secondary level core areas (English, math, science, and social studies) has decreased.

Programs and opportunities for our students have been maintained.

We have implemented the Version 1.1 of our Digital Conversion Plan. More students are now using iPads to learn.

We continue to maintain and improve our facilities District-wide. Special thanks to our Booster Clubs for your continued support.

In the 2012-13 budget, we will use some of our accumulated fund balance to keep our property tax rate among the lowest in the area. Last year, we were second only to Oshkosh.

I invite you to read more about the great things that are happening in our District through our website. As always, we encourage you to consider becoming involved by attending our meetings or providing suggestions and feedback via:

920-751-6800 ext. 105.